

EKI-6333AC Configuration Utility

Quick Guide


V1.0

2020/6/16

Installation

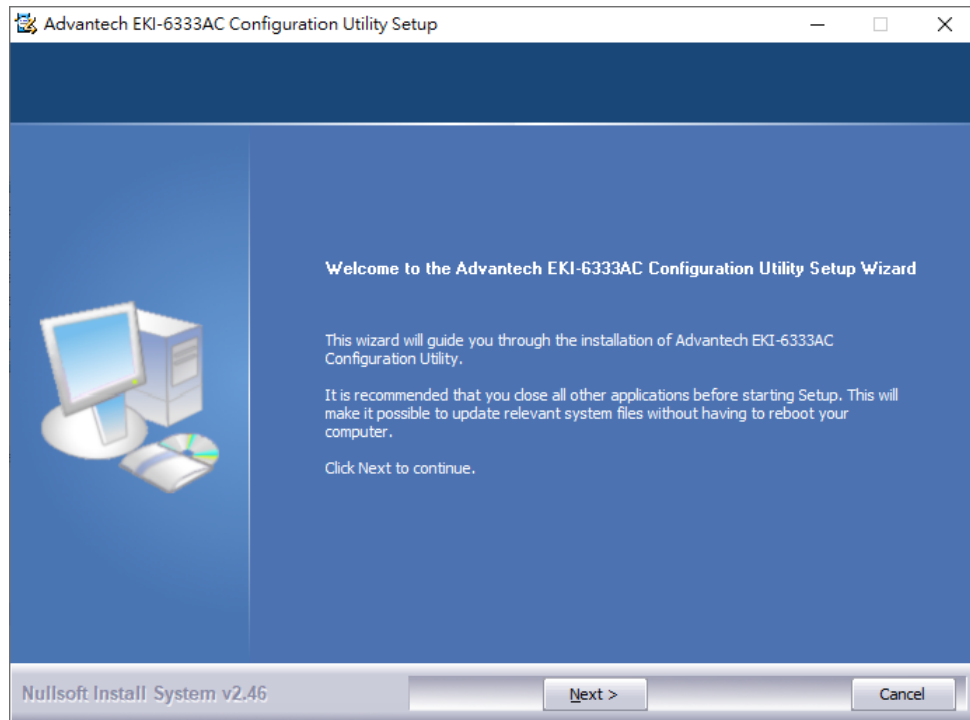
Get Installation File

Download setup program form Advantech official website

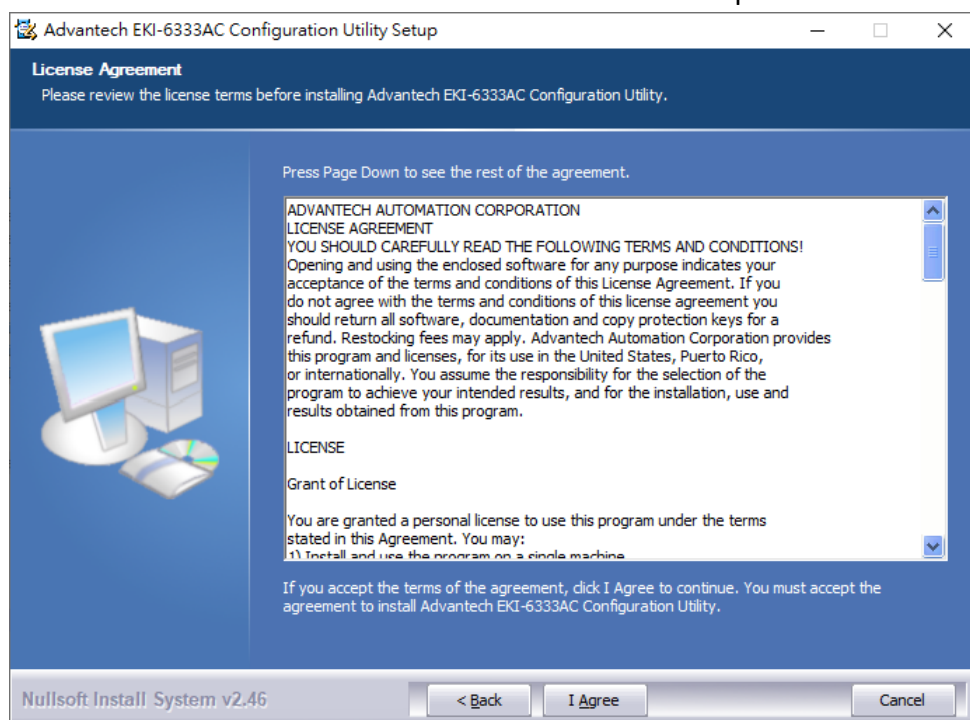
 EKI_6333AC_Configuration_UTILITY_v3.04_20220616.exe

Installation

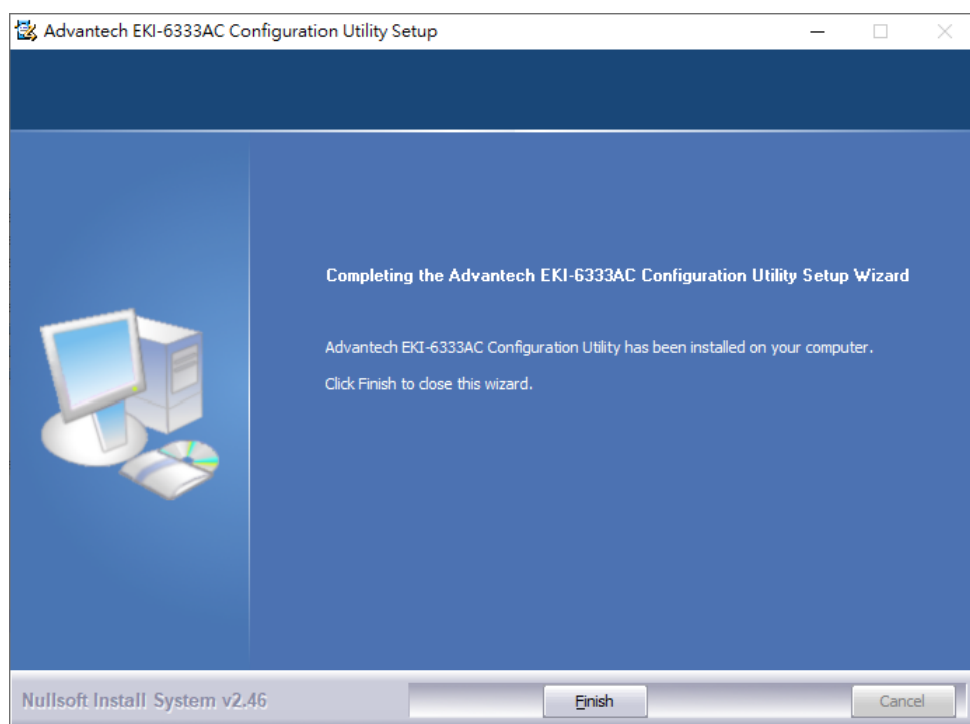
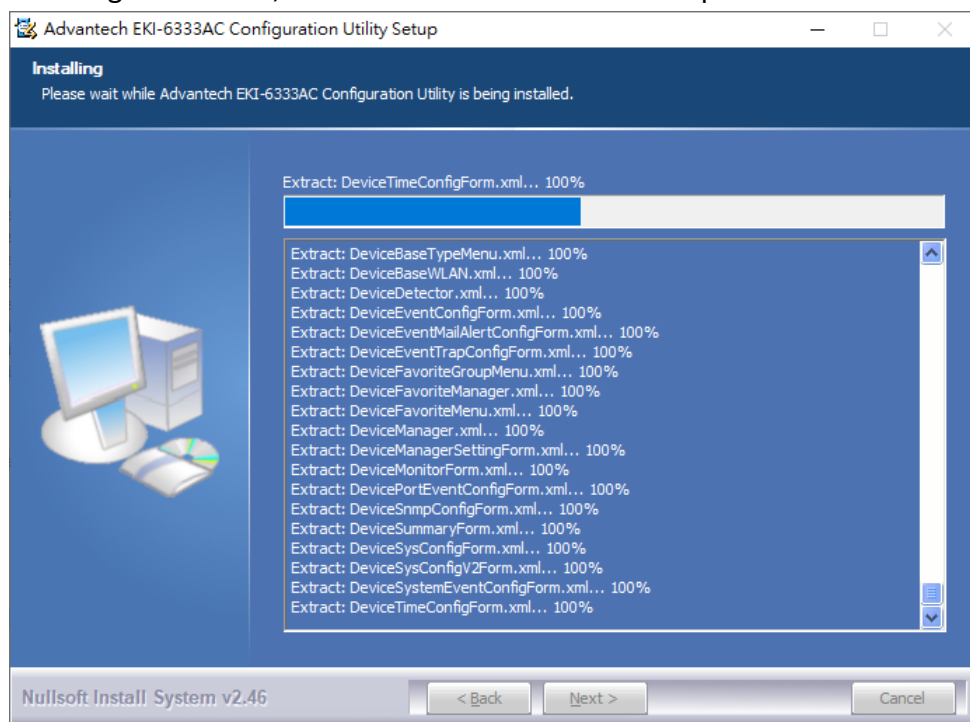
Double click installation file , and follow the wizard to install EKI Device Configuration Utility



Press **I Agree** the LICENSE AGREEMENT to continue or **Cancel** to stop the installation.



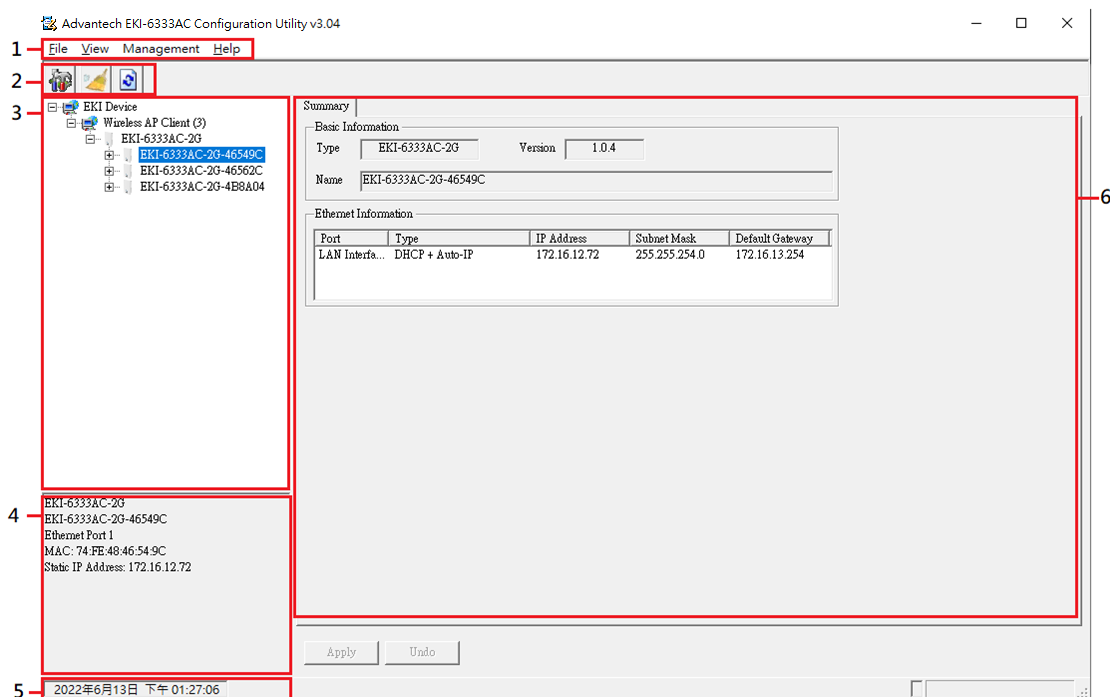
Waiting for finishing installation, and click Finish to conclude the process and exit.



Discover Device

Starting the Configuration Utility

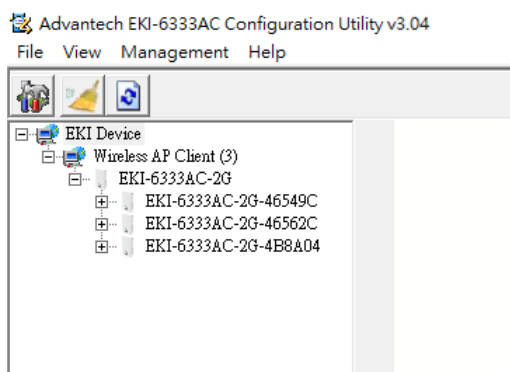
User could open the Configuration Utility from Window Start Menu by clicking **Start > EKI Device Configuration Utility > Advantech EKI Device Configuration Utility**. The Configuration Utility displays as shown in the following figure.



No	Item	Description
1	Menu Bar	Display File, View, Management and Help.
2	Quick Tool Bar	Useful management functions shortcuts.
3	Device List Area	Available devices are listed in this area.
4	Information Panel	Click on the devices or move cursor to the devices, the related information is shown in this area.
5	Status Bar	Displays the current time and message.
6	Configuration Area	Click on the item on the Device List Area, the configuration page displays.

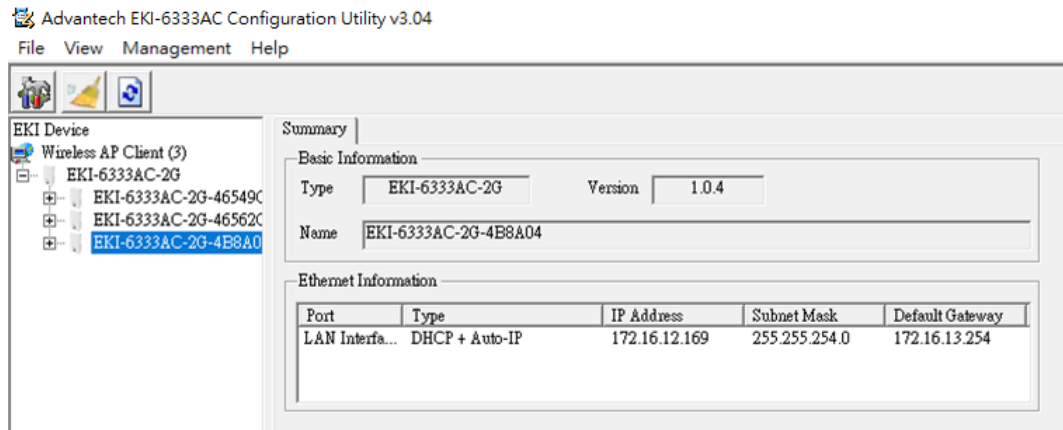
Auto Searching

Configuration Utility will search all the supported devices on the network automatically, and shown them on the Device List Area of the utility.



Device Basic Information

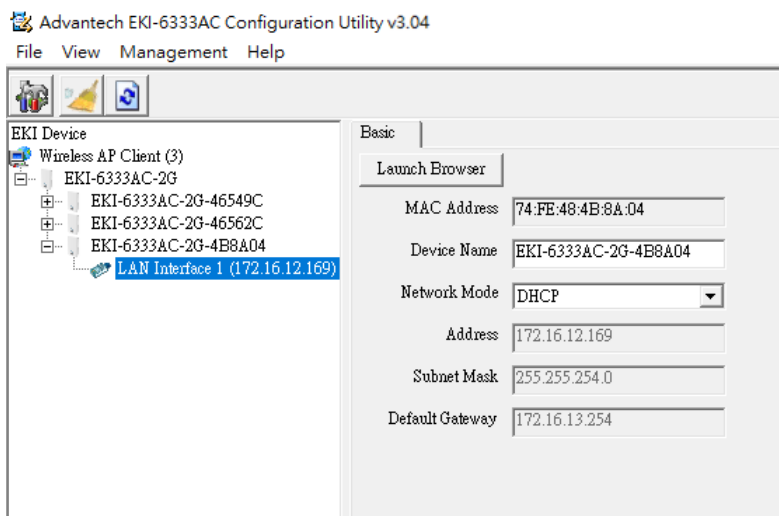
Select device from **EKI Device** tree view, the Configuration Area shows the summary of **Basic Information** included device type, version and name, and **Ethernet Information**.



Device Configuration

Basic Configuration

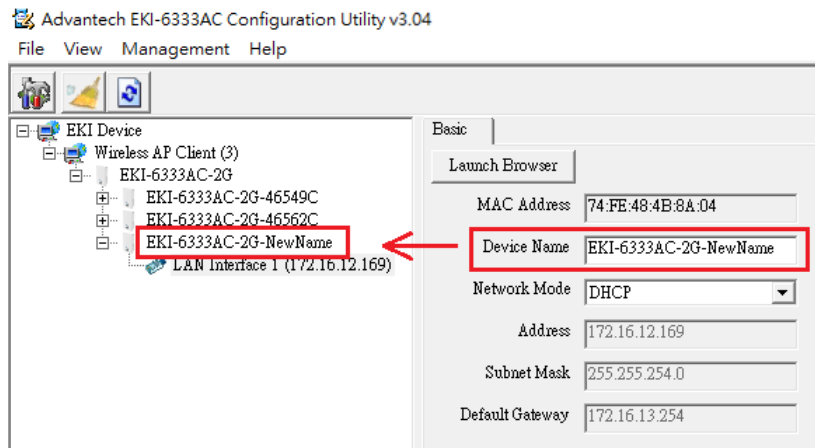
Expand the device node and select LAN Interface, basic configuration page will be shown.



This page provides **Device Name** and basic **IP configuration** setting.

Change Device Display Name

Modify the **Device Name** could change the device display name. This feature only for Configuration Utility v3.4.0.3 (or later) and FW v1.0.4 (or later).



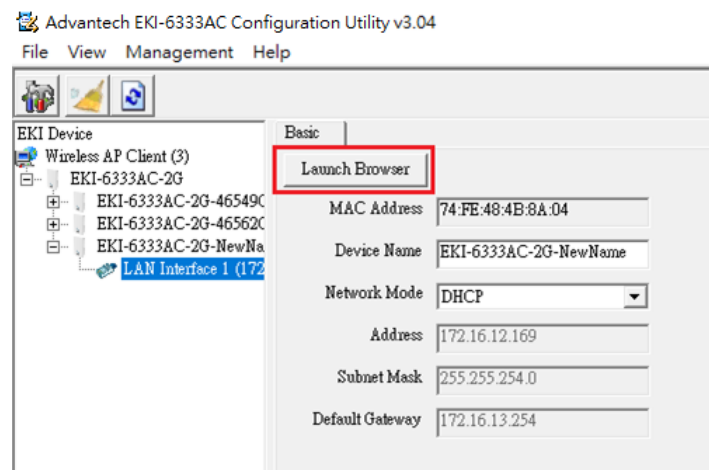
Apply New Setting

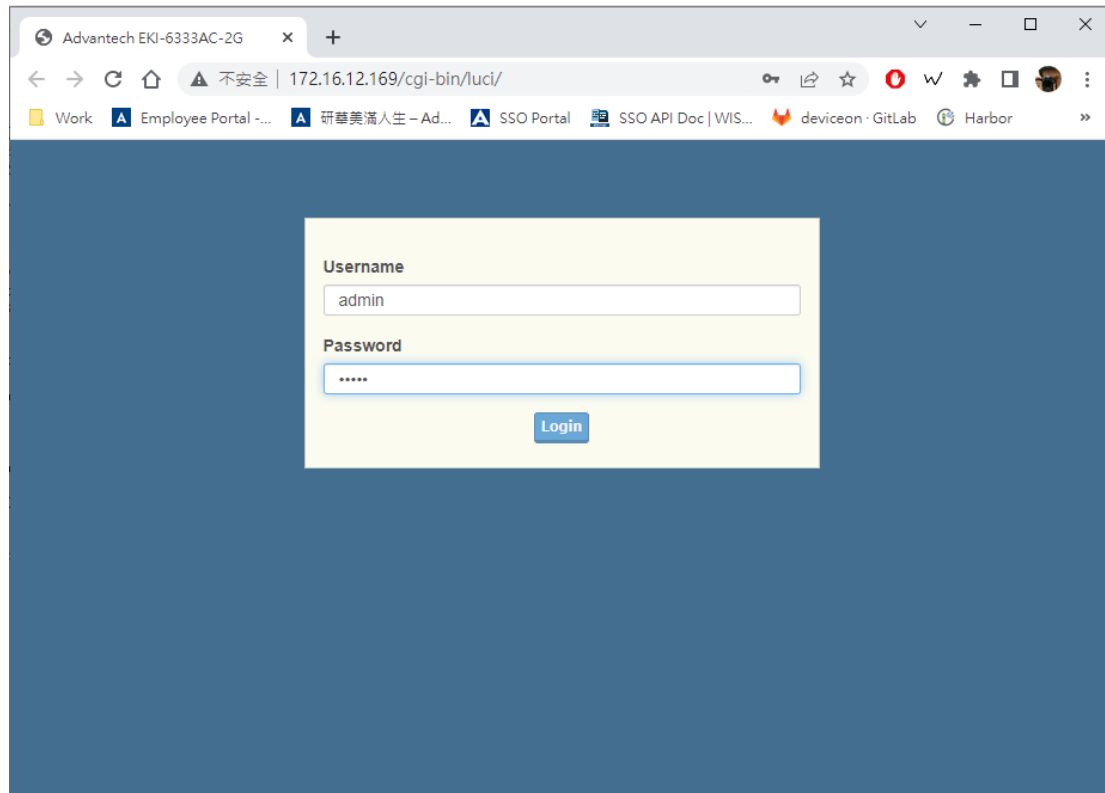
User needs to click the **Apply** button to apply the changing to device. And then, device will reboot to using new setting automatically.

Launch Browser

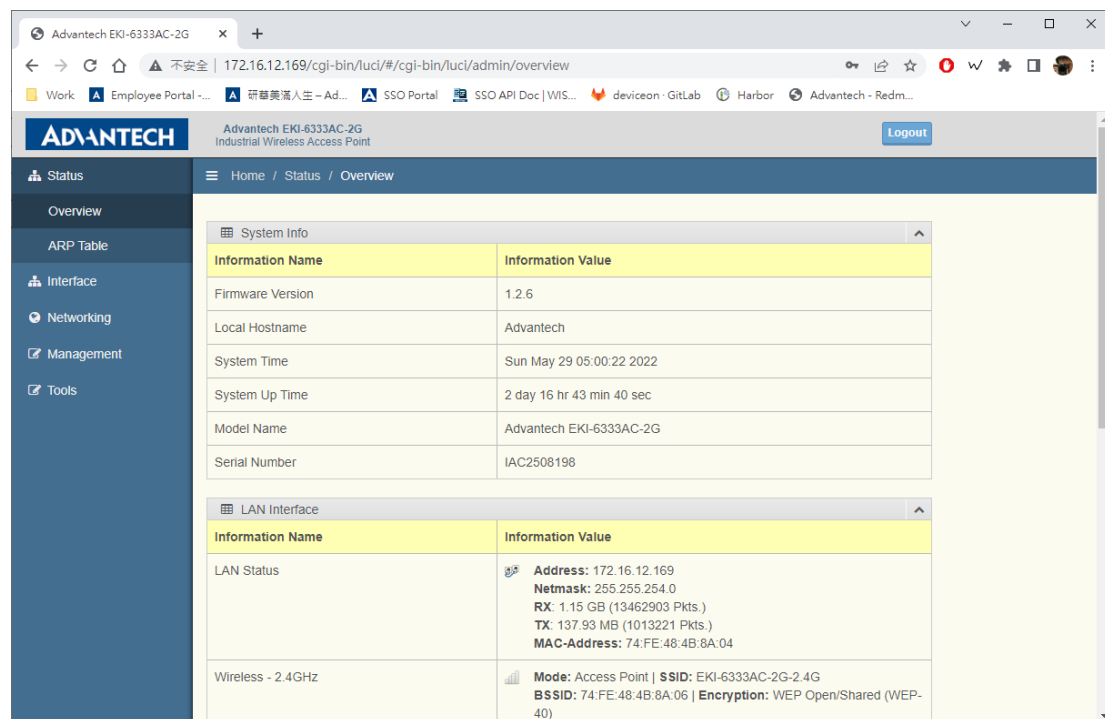
Accessing the Web Page via Configuration Utility

In **Basic** tab page, the **Launch Browser** button could access the web page via default browser. Note that, the host IP address and device IP address have to be in the same subnet.

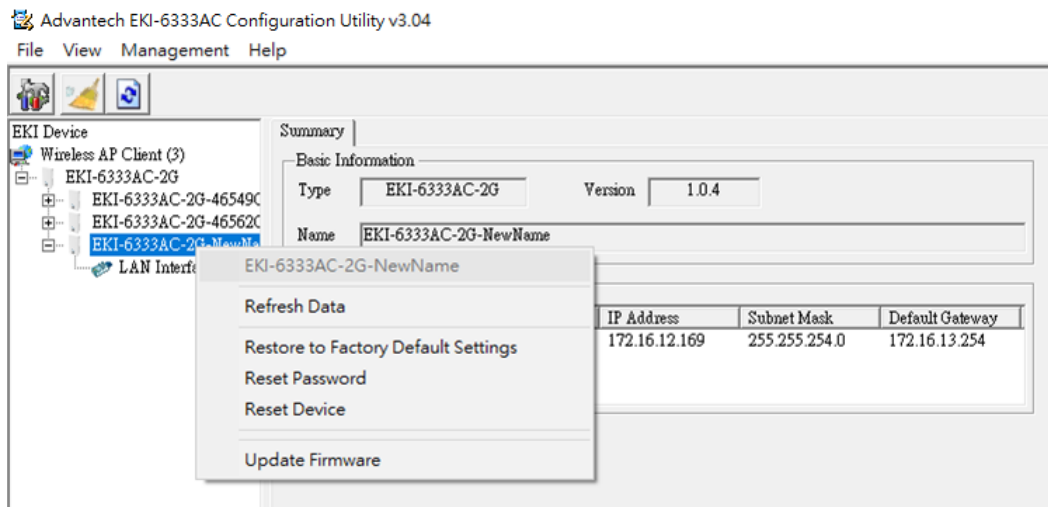




In web-utility, user could configure the whole features for device.



Basic Function



Refresh Data

Refresh all information of the selected device.

Restore to Factory Default Settings

The configuration utility provides the function to restore the device to factory default settings. The confirm message will display after clicking **Restore to Factory Default Settings**. If you really want to restore the device to factory default settings, please click **Yes** button to continue. **Power off the device within 60 seconds**. After reconnecting the power, all settings will be reset to the factory default. If the power supply remains connected for more than 60 seconds, the settings of the device will not be changed.

Reset Password

Reset the password to default password (**admin**).

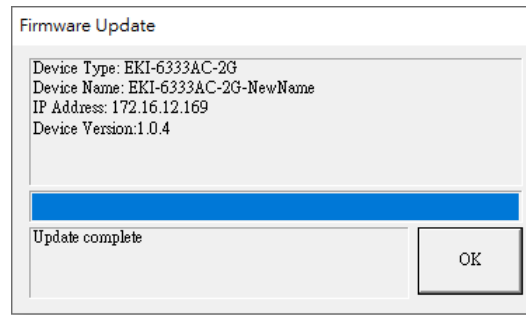
Reset Device

The Reset Device is available to allow you to reset the device.

Update Firmware

Update firmware with local image binary file. Please access Advantech's website: <http://www.advantech.com> to download the latest version of the firmware. Before updating the firmware, make sure that your host's Network domain is as same as the device or the host can establish the TCP connection to the device.

Select the firmware file you want to update. Waiting for finishing update firmware and click **OK** button.



Device has to take few minutes to reboot and apply new firmware file.